

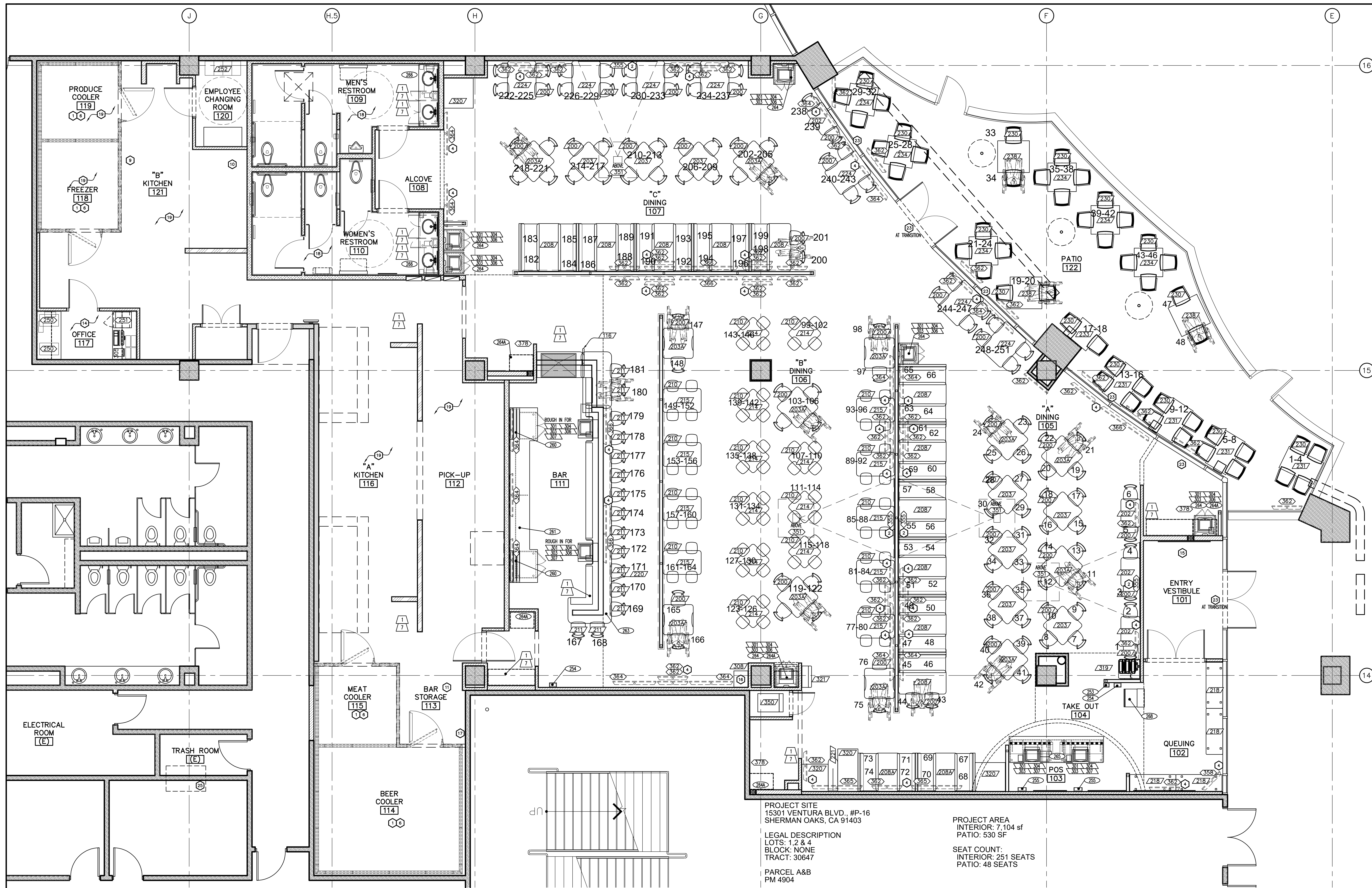


DRAWING ISSUE	DATE	7/9/12
	NO DESCRIPTION	80% CHECKSET

EQUIPMENT FLOOR PLAN

PROJECT NUMBER
46996

SHEET NUMBER
EQ1



PROJECT SITE
15301 VENTURA BLVD., #P-16
SHERMAN OAKS, CA 91403

LEGAL DESCRIPTION
LOTS: 1, 2 & 4
BLOCK: NONE
TRACT: 30647

PARCEL A&B
PM 4904

SITET AREA: 373,006 SF

PROJECT AREA
INTERIOR: 7,104 SF
PATIO: 530 SF

SEAT COUNT:
INTERIOR: 251 SEATS
PATIO: 48 SEATS

01 EQUIPMENT FLOOR PLAN
SCALE: 1/4"=1'-0"

SYMBOL LEGEND		
	FURNISHINGS	
	FIXTURES	
	EQUIPMENT	
	MILLWORK	
	SINK ACCESSORIES	
REMARKS		
01	HAND SOAP DISPENSER BY OWNER	1
07	PAPER TOWEL DISPENSER BY OWNER	2
TOILET ROOM DETAILS-SEE A700. BAR DETAILS-SEE A701/A702		

- GENERAL NOTES**
- KITCHEN EQUIPMENT SUPPLIER SHALL SET IN PLACE ALL KITCHEN AND BAR EQUIPMENT (INCLUDING WALK-IN BOXES). KITCHEN EQUIPMENT VENDOR IS RESPONSIBLE FOR CONNECTING CONTROL WIRING. GC IS RESPONSIBLE FOR ALL OTHER FINAL ELECTRICAL AND PLUMBING CONNECTIONS TO EQUIPMENT. GC IS RESPONSIBLE FOR CONTROL AND INTERCONNECTION WIRING FOR WALK-IN BOXES AND HOOD. SEE WIRING DIAGRAMS ON ELECTRICAL DRAWINGS.
 - EQUIPMENT VENDOR TO FIRMLY ANCHOR ANY FURNITURE OR EQUIPMENT WHICH IS REQUIRED TO BE FIXED. CHALK AND SEAL TO WALLS AND FLOOR.
 - C02 VA BULK STORAGE (#340). C02 SUPPLIER TO PROVIDE ALL TUBING AND FINAL CONNECTIONS. G.C. TO PROVIDE CHAIN AND LOCK TO SECURE TANKS TO WALL.
 - COORDINATE EXACT LOCATION AND INSTALLATION OF BEER TAPS (105) AND PIPING FOR BEER LINES WITH BEER EQUIPMENT SUPPLIER.
 - TV MONITORS AND YOKE, PROJECTORS AND SCREENS, AND SUSPENSION SYSTEM BY AN CONTRACTOR. TV'S TO BE MOUNTED AT 6'-0" AFF TO BOTTOM OF TV, UNLESS OTHERWISE NOTED ON DRAWINGS OR DIRECTED OTHERWISE BY OWNER. ALL TV'S ARE TO BE SUSPENDED FROM CEILING. PROJECTORS AND SCREENS TO BE SUSPENDED FROM ROOF JOISTS WITH THREADED ROD AND UNISUIT. SEE INTERIOR ELEVATIONS FOR HEIGHTS.
 - SEE THIS SHEET, KITCHEN DRAWINGS AND ELECTRICAL DRAWINGS FOR OFFICE, FOOD SERVICE AND BACK BAR EQUIPMENT LAYOUTS.
 - INSTALL MENU BOXES AT LOCATIONS DETERMINED BY OWNER.
 - KITCHEN EQUIPMENT BELOW HOOD TO BE ON CASTERS AND INSTALLED WITH QUICK DISCONNECTS FOR CLEANING PURPOSES.
 - 3" GRAMMET IN COUNTERTOP AT MONITORS, PRINTERS, FAX MACHINES, ETC. COORDINATE EXACT LOCATION WITH OWNER.
 - MONITORS AND YOKE, PROJECTORS AND SCREENS, BY AN CONTRACTOR. COORDINATE POWER FOR PROJECTORS WITH ELECTRICAL CONTRACTOR.
 - GC TO SEAL WALK-IN BOX PENETRATIONS.
 - ACCESSIBLE TABLES TO BE PROVIDED WHERE SHOWN ON PLAN WITH H/C SYMBOL.
 - SELF SERVICE SHELVES AND DISPENSING DEVICES FOR TABLEWARE, DISHWASH, CONDIMENTS, FOOD AND BEVERAGES SHALL NOT BE MORE THAN 54" AFF, NOT LESS THAN 9" AFF AND ACCESSIBLE FROM WITHIN 25" FROM EDGE OF COUNTER.
 - KITCHEN VENDOR TO INCLUDE RECHARGING OF ALL EXISTING REFRIGERATION LINES.

SEAT COUNT	
AREA	SEATS PER AREA
DINING TOTAL	251
PATIO	48
PATIO TOTAL	299
SEATING TOTAL	299

AV SCHEDULE		
MARK	DESCRIPTION	QUANTITIES
350	AUDIO/VIDEO EQUIPMENT RACK	1
351/355	PROJECTOR/PROJECTION SCREENS 169 RATIO	4
357	SPEAKERS	6
358	32" FLAT SCREEN HD TV	1
362	40" FLAT SCREEN HD TV	46
364	60" FLAT SCREEN HD TV	12
365	70" FLAT SCREEN HD TV	2
366	80" FLAT SCREEN HD TV	5

VERIFY WITH EQUIPMENT FLOOR PLAN (EQ1) & INTERIOR ELEVATIONS

- KEY NOTES**
- KITCHEN EQUIPMENT VENDOR TO VERIFY CLEAR DIMENSIONS PRIOR TO ORDERING WALK-IN BOXES.
 - PROJECTOR SCREENS PROVIDED BY VENDOR.
 - LINE OF SIGNAGE ABOVE.
 - SEE SHEET A800 FOR TV HEIGHTS.
 - NOT USED.
 - SST CLOSURE ANGLE AT COOLER TOP/SIDE AND ADJACENT WALL. FURNISHED BY KITCHEN EQUIPMENT VENDOR. INSTALLED BY GC. REF 05 & 06/A501.
 - NOT USED.
 - NOT USED.
 - LOCKABLE WIRE CAGE ENCLOSURE.
 - 4" CONCRETE FLOOR FOR WATER HEATER.
 - CHAIN TANKS TO WALL.
 - NOT USED.
 - NOT USED.
 - REFERENCE ENLARGED PLANS, ELEVATIONS & DETAILS ON ARCHITECTURAL AND MEP DRAWINGS.
 - COMMUNITY BOARD - VERIFY LOCATION WITH BHW CONSTRUCTION MANAGER.
 - PROVIDE POWER & DATA CONNECTIONS AS REQUIRED FOR FUTURE ATM AT THIS LOCATION.
 - LOCATION OF BEER BLASTER. VERIFY LOCATION AND SIZE W/ RACK DRAFT CO.
 - REFER A700 FOR LOCATION OF TOILET ACCESSORIES.
 - REFER KITCHEN PLANS FOR EQUIPMENT DESIGNATIONS, SCHEDULES AND ELEVATIONS OF EQUIPMENT.
 - NOT USED.
 - NOT USED.
 - NOT USED.
 - WINDOW SHADES TO BE PROVIDED ON ALL WINDOWS WITHOUT SPANDREL GLASS - SHADES BHW VENDOR.
 - NOT USED.
 - GREASE RECOVERY SYSTEM - ON 4" HIGH CONCRETE PAD IN BASEMENT LEVEL EXISTING TRASH ENCLOSURE. REF A401 & MEP FOR DETAILS, ROUGH-IN INFORMATION, SCOPE OF WORK, ETC.